

GE 100 Orientation Meeting 2024 Fall

PSYCHOLOGY DEPARTMENT



WELCOME CLASS OF 2030



Introducing:

- Department personnel
- Faculty Members by research areas
- Peer Mentors

Curriculum

Registration

Scholarships

University life

Exchange programs

Q & A

Itır akır Ekingen
Administrative Assistant

Ofis: H-353

Telefon: ext. 3415

E-posta adresi:

psyc@bilkent.edu.tr



Michelle Adams

Department Chair

Ofis: H-353

Telefon: ext. 3415

E-posta adresi:

psyc@bilkent.edu.tr



Developmental Psychology



Jedediah
Allen



Seçil
Gönültaş



Hande
Ilgaz



Cognitive Psychology

Experimental/Behavioral



Nilsu Atılgan



Miri Besken



Demet Özer



Tuğba Uzer Yıldız



Cognitive Psychology-Neuroscience



Hüseyin
Boyacı



Burcu Ayşen
Ürgen



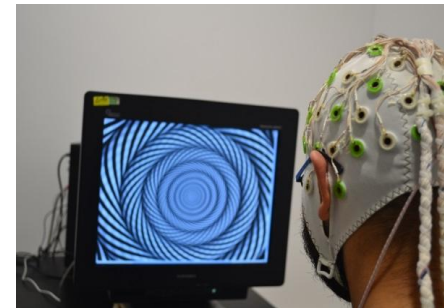
Ausaf
Farooqui



Timothea
Touloupoulou



Zahide
Pamir



Cognitive Psychology and Neuroscience – Animal Models

Michelle
Adams



Social Psychology



Ezgi
Sakman



Selin
Salman-Engin

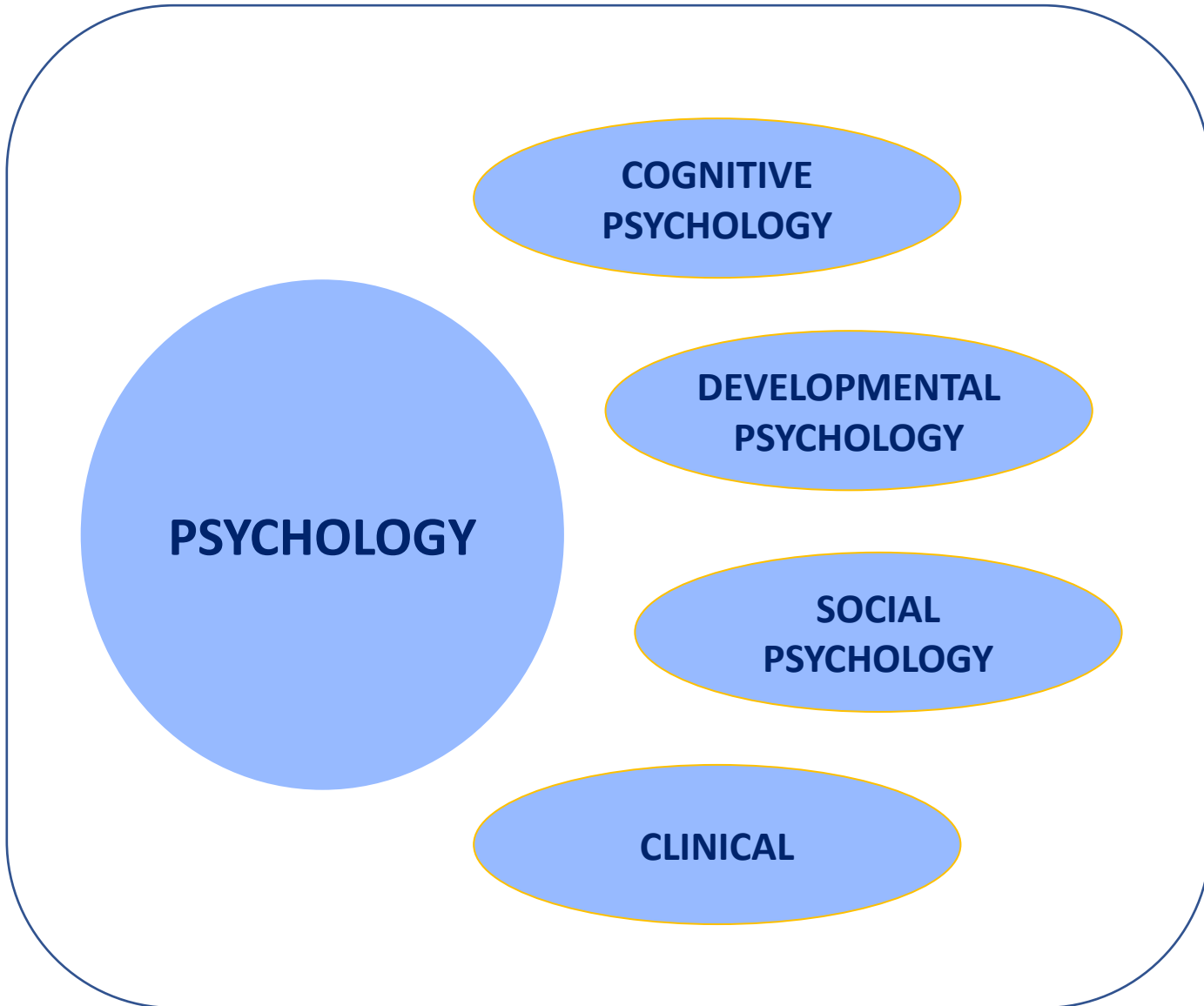


Emine T. Ulaşan-Özgüle



Why keep an open-mind?

NEUROSCIENCE

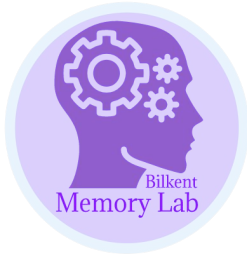


Research at Bilkent Psychology:

https://psy.bilkent.edu.tr/?page_id=3903



- Adams Aging Lab
- Bil-Cognition Lab
- Bil-Ge: Bilkent Development Lab
- Brain Development & Psychosis Lab
- Cognitive Computational Neuroscience Lab
- Computational and Biological Vision Group
- Functional Neuroplasticity Lab
- Higher Mental Functions Group
- Memory lab
- Multimodal Language Lab
- READ-lab
- SoGeLab



READ-lab

MuLaB Multimodal Language Lab

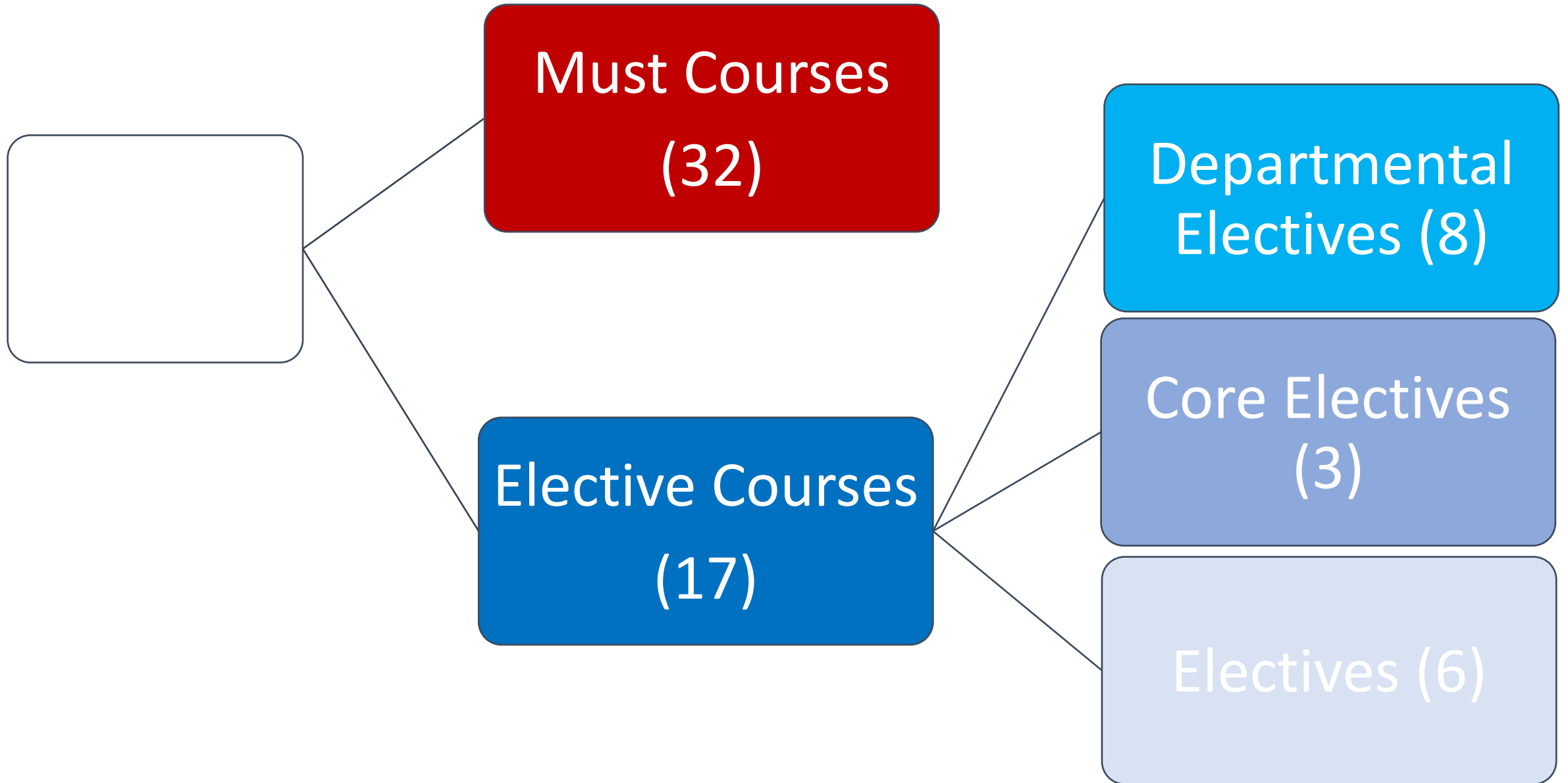


Curriculum

- AIM: To provide a strong foundation in psychology to seek higher education in preferred concentration of psychology, or work as a psychologist.
- Undergraduate Coordinator: Dr. Zahide Pamir



<https://stars.bilkent.edu.tr/homepage/curriculum.php?DEPT=PSYC>



YEAR 1 – FALL

CS 121	Introduction To Computer Applications & Programming
ENG 101	English & Composition I
GE 100	Orientation
MATH 105	Introduction To Calculus I
PSYC 101	Introduction To Psychology I / Cognitive & Biological
TURK 101	Turkish I

YEAR 1 – SPRING

ENG 102	English & Composition II
MBG 110	Introduction To Modern Biology
PSYC 103	Introduction To Psychology II / Social & Developmental
TURK 102	Turkish II
	Arts Core Elective

YEAR 2 - FALL

GE 250	Collegiate Activities Program I
HIST 200	History Of Turkey
HUM 111	Cultures, Civilizations & Ideas I
PSYC 200	Cognitive Psychology
PSYC 203	Statistics I
PSYC 204	Research Methods I
PSYC 230	Social Psychology

YEAR 2 - SPRING

GE 251	Collegiate Activities Program II
HUM 112	Cultures, Civilizations & Ideas II
PSYC 205	Statistics II
PSYC 206	Research Methods II
PSYC 220	Brain & Behavior
PSYC 240	Developmental Psychology

Elective

International Experience: Erasmus & Exchange Programs

- ERASMUS
The Netherlands, Germany, The Czech Republic, Poland, Spain (University of Groningen, Tilburg University, Masaryk University, Adam Mickiewicz)
- International Exchange Programs
Australia, USA, Canada, Japan, New Zealand, Singapoure, Taiwan

20 students are registered to use these opportunities in 23-24
ERASMUS Exchange Coordinator: Dr. Ausaf A. Farooqui
ERASMUS FEASS Coordinator: Betül Esmer



YEAR 3 - FALL

COMD 358	Professional Communication
PSYC 310	Perception, Attention, & Action
PSYC 340	Learning, Remembering, & Thinking
PSYC 350	Cognitive & Social Development
PSYC 433	Abnormal Psychology
	Computing Methods Elective

YEAR 3 - SPRING

PSYC 430	Clinical Psychology
	Department Elective
	Department Elective
	Department Elective
	Elective
	Elective

Summer Internship

- Summer of 3rd year, 20 business days
- You are encouraged to do more than one internship!
- Summer Internship Coordinator: Dr. Emine Ulaşan Özgüle

Internships can be done at:

Applied settings:

- State hospitals
- Private or State Schools or Preschools
- Human Resources Departments at companies



Summer Internship

Internships can be done at university laboratories:

At labs in Turkey



Gelişim Psikolojisi Yaz
Stajyerleri 2018



UMRAM Yaz
Stajyerleri 2019



İmge Saltık -
Ludwig Maximilians
Universitat
(Almanya)



İpek Işık -
McGill University
(Kanada)



Berfu Ulusoy -
University of Manchester
(İngiltere)

YEAR 4 - FALL

PSYC 399

Summer Training

PSYC 498

Senior Project I

Department Elective

Department Elective

Department Elective

Elective

YEAR 4 - SPRING

PSYC 499

Senior Project II

Department Elective

Department Elective

Elective

Elective

Humanities Core Elective

DEPARTMENTAL ELECTIVES

PSYC 320

Cognitive Neuroscience

PSYC 330

Theory and Practice of Applied Social Psy

PSYC 360

Individual Differences and Personality

PSYC 391

Directed Research in Psychology

PSYC 405

Introduction to fMRI

PSYC 410

Neuropsychology

PSYC 415

Cognitive Aging

PSYC 420

Selected Topics in Cognitive Psychology

PSYC 421

Selected Topics in Social Psychology

DEPARTMENTAL ELECTIVES

<u>PSYC 422</u>	Selected Topics in Developmental Psychology
<u>PSYC 431</u>	Psychological Testing and Measurement
<u>PSYC 434</u>	Child and Adolescent Psychopathology
<u>PSYC 435</u>	Industrial and Organisational Psychology
<u>PSYC 438</u>	Interpersonal Relationships
<u>PSYC 439</u>	Visual Neuroscience
<u>PSYC 442</u>	Psychology of Language
<u>PSYC 443</u>	Animal Behavior
<u>PSYC 449</u>	Clinical Interview Techniques
<u>PSYC 482</u>	Mind in Evolution
<u>PSYC 483</u>	Theory of Mind
<u>PSYC 484</u>	Psychology of Play

ARTS CORE ELECTIVE

<u>ADA 265</u>	How Houses Build People
<u>COMD 203</u>	Media Studies I
<u>FA 171</u>	Introduction To Art & Architecture History
<u>HART 117</u>	Ways Of Seeing: Approaches To Art & Architectural History
<u>MSC 110</u>	The Culture & Basics Of Music Making
<u>THR 110</u>	Introduction To Theatre

HUMANITIES CORE ELECTIVE

<u>EDEB 201</u>	Introduction To Turkish Fiction
<u>HART 120</u>	Human Evolution & World Prehistory
<u>HART 221</u>	Great Discovery From The Ancient World
<u>PHIL 101</u>	Introduction To Logic
<u>PHIL 308</u>	Philosophy Of Mind

COMPUTING CORE ELECTIVE

CS 115 Intro To Programming In Python

CS 125 Intro To Data Analysis For Social Sciences

CS 153 Intro To Computer Graphics

CTIS 151 Intro To Programming

CTIS 165 Fundamentals Of Information Systems

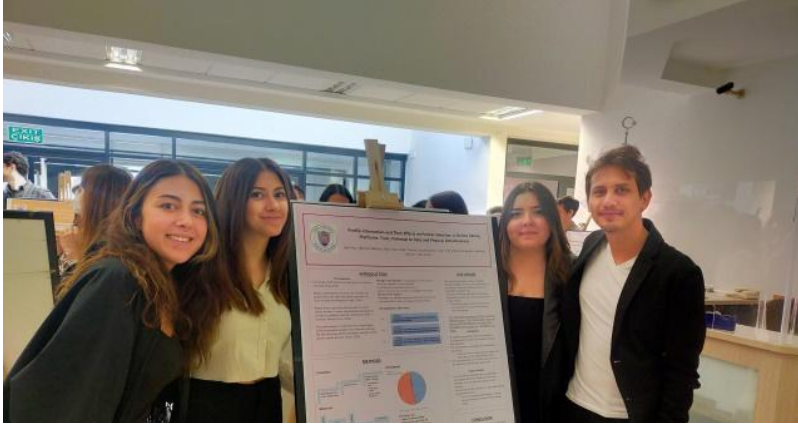
CTIS 166 Information Technologies

EEE 482 Computational Neuroscience

Senior Project

- PSYC 498 & PSYC 499
- In-groups or individual
- Senior Thesis Coordinator: Dr. Demet Özer





Senior Thesis Day - Poster Presentations

Registration

Pre-registration:

- Watch the dates (Academic Calendar, University Emails)
- Reserve a spot in must courses, electives are subject to quota restrictions

Registration:

- Watch the dates and times allotted by the university
- Pre-requisites: You cannot take a course, if you have not successfully completed the pre-requisites for it.
- Talk to your academic advisor when making plans for the next semester.

Course Success

- Course letter grades vary from A (most successful) to F (not successful)
- D, D+ or C- will permit you to proceed without retaking the course, if your cGPA drops below 2.00 (i.e., C), you will need to retake these courses.
- Every instructor identifies the grade criteria in their courses
- These criteria and class rules are announced to students via the course syllabus

Fz: The criteria by which a student qualifies to take the final exam

Merit Scholarship

At the end of the academic year

To move from no scholarship to partial scholarship

- Students who have taken the full course load
- GPA > 3.30
- Placed in the top 5% among non-scholarship students

To obtain higher partial scholarship or full-scholarship

- The student has placed in the top 3% among 50%-scholarship students.

Your GPA and cGPA matter!

Grade Point Average for the semester (GPA): The average of students' grades within a particular semester. Grades are multiplied by their respective credits and divided by the total number of credits students have taken that semester.

Cumulative Grade Point Average (cGPA): The average all of students' grades. Grades are multiplied by their respective credits and divided by the total number of credits students have taken at Bilkent.

Academic Standing

High Honor: $\text{GPA} > 3.49$ AND $\text{CGPA} > 2.00$

Honor: $\text{GPA} = 3.00\text{-}3.49$ AND $\text{CGPA} > 2.00$

Satisfactory: $\text{CGPA} > 2.00$

On Probation: $\text{CGPA} = 1.80\text{-}1.99$

Unsatisfactory: $\text{CGPA} = 0.00\text{-}1.79$

<https://catalog.bilkent.edu.tr/current/general/standing>

Tips for University Life

Contact the right person to seek information or solution to problems (in the appropriate way):

1. Administrative Assistant for the department
2. Instructor of the Course
3. Academic Advisor
4. Undergraduate Coordinator
5. Department Chair
6. Peer Mentors

What's the right way to seek to assistance?

- Administrative Personnel

Week days 9:00-17:30

- Faculty Members

Email (state the question or problem clearly, you can ask for an appointment)

Leave enough time for emails to be responded, check your emails for answers

But first, have you done your part?

Make sure you have first researched the answer to your question via Bilkent resources.

- Have you checked the STARS system? Course times**
- Have you checked the syllabus? Catalogue/Grading, Attendance Policy, Fz criteria**
- Have you checked the Moodle page of the course? Course material, homeworks, deadlines etc.**

Tips for University Life – In class

The faculty members approach all students with respect, the same is asked of you.

- Do not engage in behavior that may distract the instructor or the other students (phone, conversing with friends)

Tips for University Life – On Campus

Take the university rules seriously.

- Smoking on Campus
- Traffic: Right of way for pedestrians (but pedestrians still be reasonably alert)

Even if the world runs by different rules, if you violate a university rule you will be held responsible and your case will be reviewed and evaluated by the disciplinary committee of the university.

Tips for University Life

Act in accordance with academic ethics

- Strict policy on cheating of any kind (including AI use)
- No tolerance on PLAGIARISM: passing others' ideas or work (**including generative AI**) as your own (either partially or fully – any copying, no matter how brief- is strictly prohibited and is penalized by disciplinary action.

Peer-Mentors at Bilkent Psychology

- They are a diverse group of 3rd and 4th year students who are willing to help you with any questions.
- Their aim is to prevent 1st years from making common mistakes or avoid mistakes they have made themselves.



Bilkent PSYC Peer Mentoring '25

WhatsApp group



Scan this QR code using the WhatsApp

Tips for University Life – Peer Mentors

- Use your Peer Mentors for any questions regarding academic and university life.
- Double-check the information you receive. The peer mentors have the best of intentions, but they may not have all the answers to all questions.
- They have a direct line to the undergraduate coordinator, and they will also act as a bridge to let our department know of common problems, especially those that do not have easy solutions.



Coordinator: ece.tuglaci@bilkent.edu.tr
Ece Tuğlacı – PhD Student (Bilkent Psyc Alumni)

Welcome to the Psychology Department!
We hope that your time at Bilkent Psychology
contributes to the person you will become in
the best ways.
We are excited to observe your growth into the
psychologist you will become.

